

Charge Valve

FJT Series

Application

Charge valves are used to charge refrigerant and check the pressure of refrigerating and air-conditioning system.

Features

- Combination of soft seal and hard seal ensures airtightness

Approvals

Declaration according to PED

Technical Data

Applicable Refrigerant: R134a, R407C, R410A, R32, and R404A, R290

Applicable Relative Humidity: $\leq 95\%$

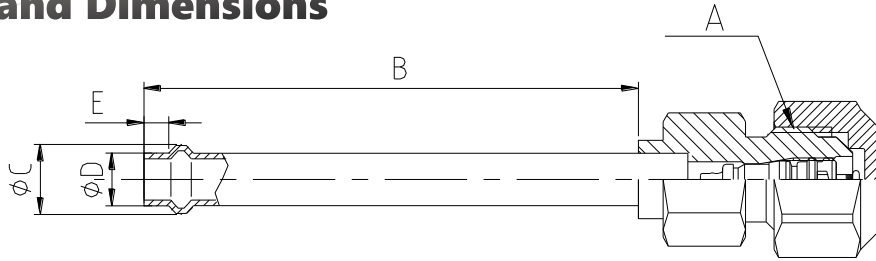
Medium Temperature: $-30^{\circ}\text{C}\sim+120^{\circ}\text{C}$

Ambient Temperature: $-30^{\circ}\text{C}\sim+70^{\circ}\text{C}$

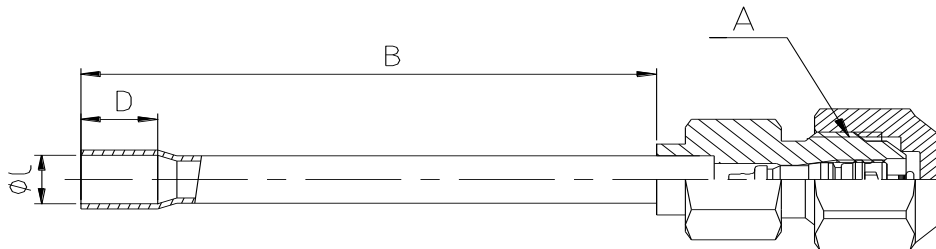
Max. Operating Pressure: 4.5 MPa



Ordering and Dimensions



Model	Code No.	Connections			Dimensions			Applicable Refrigerant
		Solder ODF Φ D		Flare A	B	Φ C	E	
		[mm]	[in.]	[in.]	[mm]	[mm]	[mm]	
FJT-8881-DG4	280004888100	6.35	1/4	1/2-20 UNF	60	8.5	3	R32, R410A, R290
FJT-8883-DG4	280004888300	6.35	1/4	7/16-20 UNF	60	8.5	3	R407C, R134a, R404A



Model	Code No.	Connections			Dimensions		Applicable Refrigerant
		Solder ODF Φ C		Flare A	B	D	
		[mm]	[in.]	[in.]	[mm]	[mm]	
FJT-8884-DG4	280004888400	6.5	1/4	1/2-20 UNF	60	8	R32, R410A, R290
FJT-8886-DG4	280004888600	6.5	1/4	7/16-20 UNF	60	8	R407C, R134a, R404A